

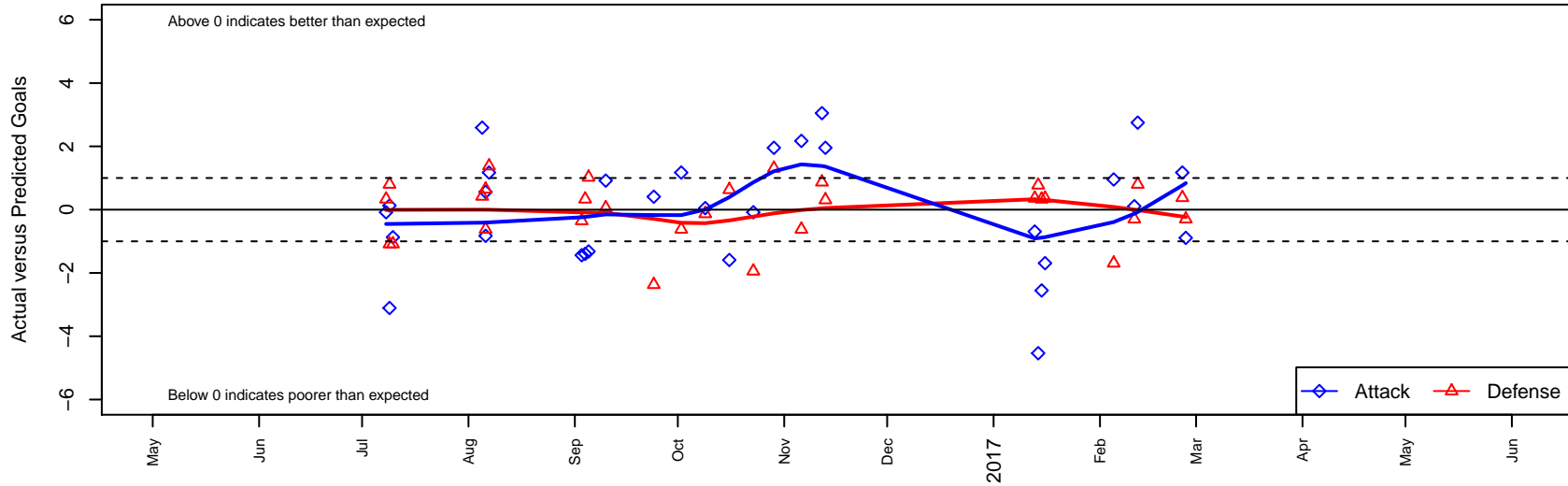
NPSA Titans Navy B01

Nowland Premier SA
 Bellevue, WA
 B01 total strength=1581
 attack=18.57 defense=12.05
 fall league = PSPL WSPL 2 U16
 notes= Islanders A, NPSA; Navy

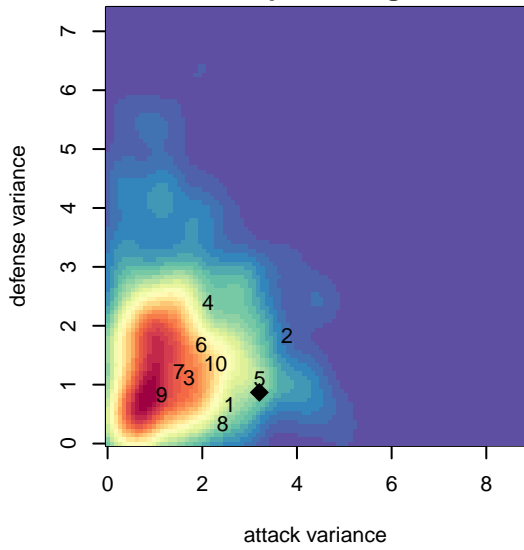
alt names used:
 NPSA Titans B01 Navy
 NPSA B01 Navy Bellevue
 NPSA Titans B01Navy
 NPSA TITANS B01 NAVY (WA)
 NPSA Titans B01 Navy
 NPSA TITANS B01 NAVY (USA)

Venues played:
 2016 Seattle United Cup BU16
 2016 WA Rush Cup B01 Silver U16
 2016 Labor Day Cup BU16 Gold
 2016 PSPL WSPL 2 U16
 2016 PacNW Winter Classic Premier II U16
 2016 WA Cup HS Gold U16

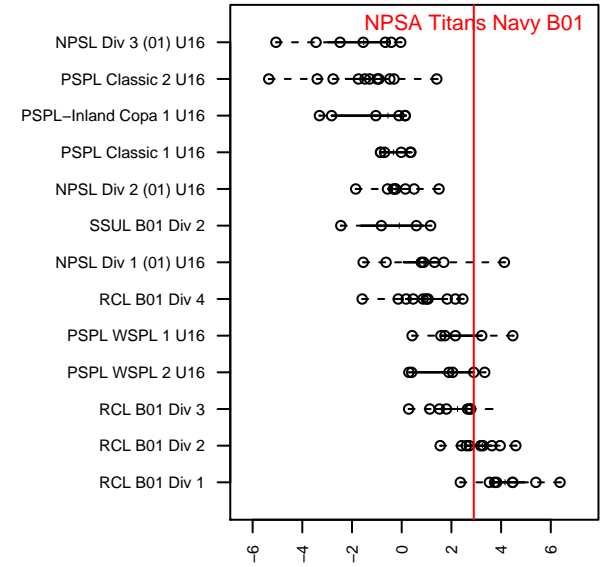
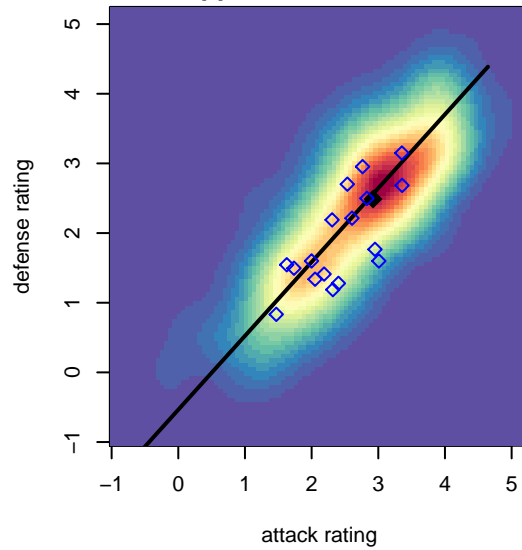
NPSA Titans Navy B01
 Dots are actual minus expected GF (blue circles) and GA (red triangles).
 Blue line is smoothed change in attack strength. Red is smoothed change in defense strength.



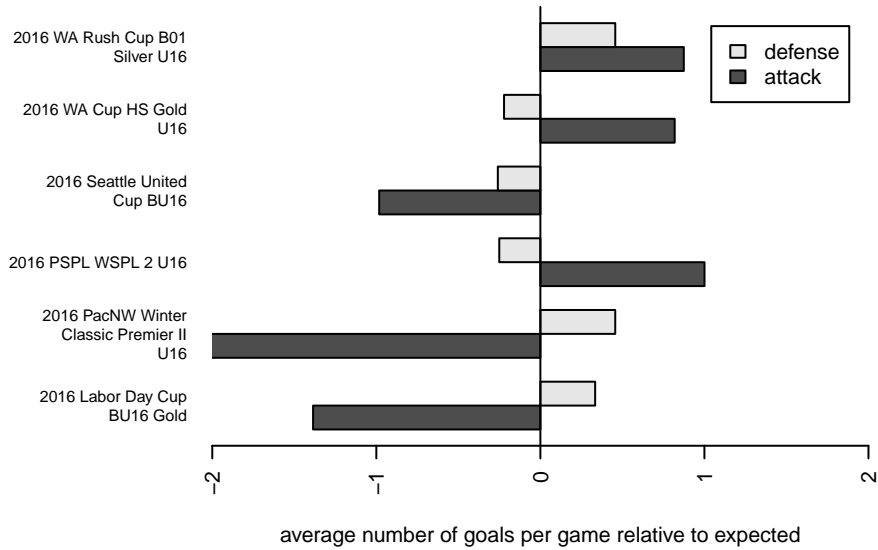
**attack and defense variance (black dot)
relative to other teams
and top 10 in region**



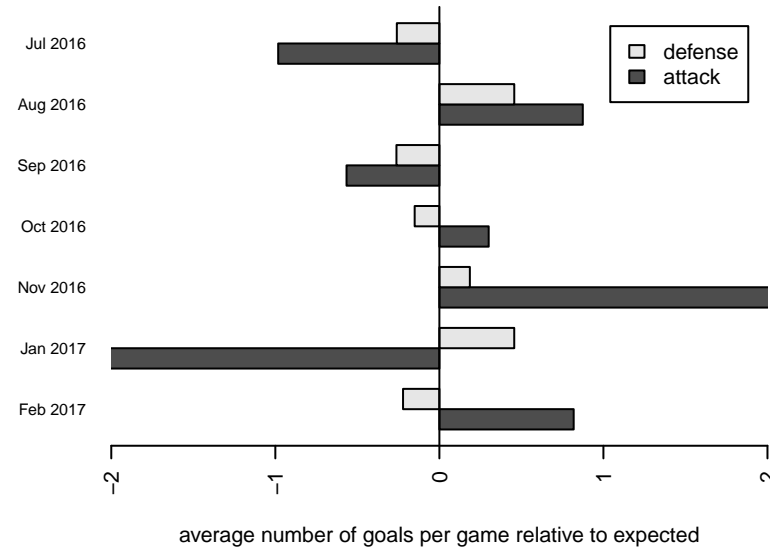
**attack and defense rating
relative to others at age
and all opponents in last 13 months**



Performance relative to 13 month average



Performance relative to 13 month average



e	home		away		venue	pred.home	pred.
2-26	Wenatchee Valley United Aguilitas B01	3	NPSA Titans Navy B01	0	2016 WA Cup HS Gold U16	2.70	0.8
2-25	NPSA Titans Navy B01	2	FPSC Fury Black B01	1	2016 WA Cup HS Gold U16	0.83	1.3
2-12	NPSA Titans Navy B01	6	Wenatchee Valley United Deportivo Teca B01	1	2016 WA Cup HS Gold U16	3.25	1.8
2-11	NPSA Titans Navy B01	1	Wenatchee Valley United Aguilitas B01	3	2016 WA Cup HS Gold U16	0.89	2.7
2-05	NPSA Titans Navy B01	4	Tynecastle FC B01	3	2016 WA Cup HS Gold U16	3.05	1.3
1-16	WPFC Navy B01	1	NPSA Titans Navy B01	0	2016 PacNW Winter Classic Premier II U16	1.36	1.6
1-15	WPFC Gold B01	0	NPSA Titans Navy B01	6	2016 PacNW Winter Classic Premier II U16	0.33	8.3
1-14	NPSA Titans Navy B01	0	PacNW White B01	0	2016 PacNW Winter Classic Premier II U16	4.54	0.7
1-13	NPSA Titans Navy B01	1	WPFC Navy B01	1	2016 PacNW Winter Classic Premier II U16	1.69	1.3
1-13	Tynecastle FC B01	1	NPSA Titans Navy B01	5	2016 PSPL WSPL 2 U16	1.31	3.0
1-12	Pumas UNAM B01	0	NPSA Titans Navy B01	9	2016 PSPL WSPL 2 U16	0.87	5.9
1-06	FPSC Fury Black B01	2	NPSA Titans Navy B01	3	2016 PSPL WSPL 2 U16	1.38	0.8
3-29	NPSA Titans Navy B01	5	Tynecastle FC B01	0	2016 PSPL WSPL 2 U16	3.05	1.3
3-23	Eclipse FC B01	3	NPSA Titans Navy B01	2	2016 PSPL WSPL 2 U16	1.06	2.0
3-16	Gala FC B01	0	NPSA Titans Navy B01	2	2016 PSPL WSPL 2 U16	0.63	3.3
3-09	NPSA Titans Navy B01	6	Pumas UNAM B01	1	2016 PSPL WSPL 2 U16	5.95	0.8
3-02	NPSA Titans Navy B01	2	FPSC Fury Black B01	2	2016 PSPL WSPL 2 U16	0.83	1.3
3-24	NPSA Titans Navy B01	4	Gala FC B01	3	2016 PSPL WSPL 2 U16	3.59	0.8
3-10	NPSA Titans Navy B01	3	Eclipse FC B01	1	2016 PSPL WSPL 2 U16	2.08	1.0
3-05	Kitsap Alliance FC Red B01	0	NPSA Titans Navy B01	0	2016 Labor Day Cup BU16 Gold	1.02	1.3
3-04	NPSA Titans Navy B01	0	Fraser Valley Selects B01	2	2016 Labor Day Cup BU16 Gold	1.40	2.3
3-03	NPSA Titans Navy B01	3	Nortac Sparta Red B01	1	2016 Labor Day Cup BU16 Gold	4.44	0.6
3-07	FPSC Fury Black B01	0	NPSA Titans Navy B01	2	2016 WA Rush Cup B01 Silver U16	1.38	0.8
3-06	NPSA Titans Navy B01	0	FPSC Fury Black B01	2	2016 WA Rush Cup B01 Silver U16	0.83	1.3
3-06	NPSA Titans Navy B01	5	Nortac Sparta Red B01	0	2016 WA Rush Cup B01 Silver U16	4.44	0.6
3-05	NPSA Titans Navy B01	7	PSA Force Black B01	0	2016 WA Rush Cup B01 Silver U16	4.41	0.4
7-10	NPSA Titans Navy B01	1	Breakers Black B01	2	2016 Seattle United Cup BU16	1.87	0.9
7-09	NPSA Titans Navy B01	2	NSC Green Wave B01	0	2016 Seattle United Cup BU16	5.11	0.8

date	home		away		venue	pred.home	pred.away
2016-07-09	Breakers Black B01	2	NPSA Titans Navy B01	2	2016 Seattle United Cup BU16	0.92	1.87
2016-07-08	Seattle United Shoreline Blue B01	0	NPSA Titans Navy B01	4	2016 Seattle United Cup BU16	0.33	4.08